

curtains : band D

bouclé (dimout)



View our full range of materials at stansons.co.uk

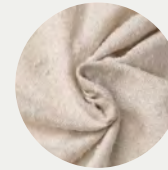
teddy_



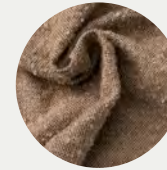
Taking inspiration from the comfort and of our childhood stuffed toys, Teddy has a fleecy textured structure. The sustainable semi-transparent curtain fabric is extremely soft with a woolly appearance. The multi-coloured bouclé yarns are uneven thickness, giving Teddy an irregular



Off White 11



Champagne 13



Light Grey 52



Caramel 25

it's all in the *details*:

Colours: 4 colours

Width: 310cm

Weight gr/m²: 217

Composition: 68% recycled PET, 32% PES

Shrinkage tolerance: 0

Light fastness: ISO 105-B02 (Class 1-8) 5

Fire resistance: M1 (NF P 92 503-507)

Absorption: ENISO 354, W = 0, 45

sustainability:

Recycled %: 68

Country of origin: Mainland Europe

Fossil fuel consumption MJ/m²:

+50% renewable energy

Carbon footprint kg CO₂ eq/m²: No data

Water consumption M³ eq/m²: No data

