

curtains : band D

voile



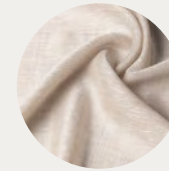
View our full range of materials at [stansons.co.uk](https://stansons.co.uk)



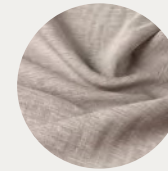
# sunset\_



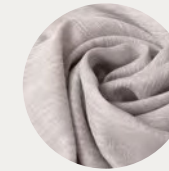
Sunset is a rich semi-transparent curtain fabric which drapes smoothly. Woven with yarns of uneven thickness and in several different colours, both horizontally as vertically. This gives the textile a deep lively and rich look. Thanks to the multi-colored yarns, it particularly stands out for its exceptionally good colour combinations with other shades in a room. Sunset has a slightly shiny appearance, which gives the fabric an iridescence. The transparent glaze also enhances the rich colour depth.



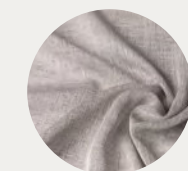
Light Almond 12



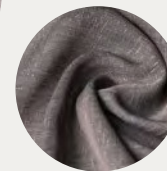
Clay Stone 14



Cloudy Grey 51



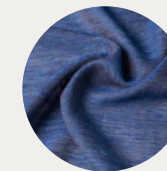
Trout Grey 52



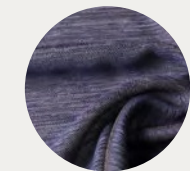
Lava Grey 5



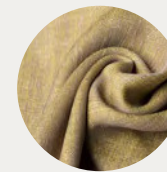
Ocean Blue 42



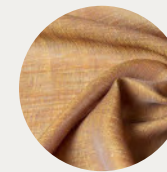
Cobalt Blue 44



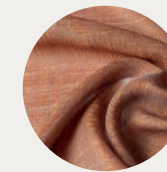
Dark Denim 4



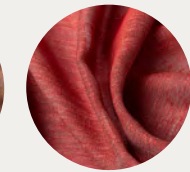
Limone Yellow 7



Golden Yellow 72



Orange 6



Chili Red 9

## it's all in the *details*:

**Colors:** 12 colours

**Width:** 300cm

**Weight gr/m2:** 150

**Composition:** 100% flame resistant polyester

**Shrinkage tolerance:** 0

**Light fastness 1 = v.low 8 = excellent:** 6

**Cleaning:** 40°

**Fire Resistance:** M1 (NF P 92 503-507)

**Acoustic rating:** 0

## *sustainability:*



**Recycled %:** 0

**Country of origin:** Mainland Europe

**Fossil fuel consumption MJ/m²:**

+50% renewable energy

**Carbon footprint kg CO2 eq/m²:** No data

**Water consumption M3 eq/m²:** No data

materials\_