

curtains : band C

weave (dimout)



View our full range of materials at stansons.co.uk



moonwalking_



Moonwalking is a twill fabric with a pronounced and distinctive yarn. It's 30 trendy tones offer warmth and lightness in a refreshingly refined, but textured aesthetic.

it's all in the *details:*

Colors: 30 colours

Width: 280cm

Weight gr/m2: 270

Composition: 100% flame resistant polyester

Shrinkage tolerance: -3

Light fastness 1 = v.low 8 = excellent: 6

Cleaning: 60°

Fire Resistance: M1 / B1 / IMO PASS / UNI 8456 / 9174

Classe Uno

Acoustic rating: 0

sustainability:

Recycled %: 0

Country of origin: Mainland Europe

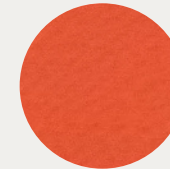
Fossil fuel consumption MJ/m²: 76.1

Carbon footprint kg CO2 eq/m²: 3.22

Water consumption M3 eq/m²: 1.45



Agrume 69



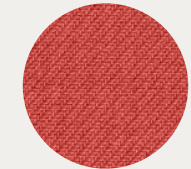
Mandarine 93



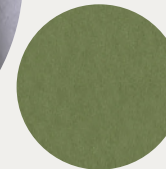
Miel 17



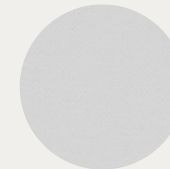
Ocean 91



Tomette 60



Olive 61



Souris 31



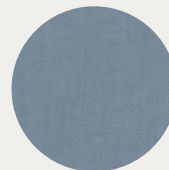
Abscinthe 132



Arctique 58



Titanium 98



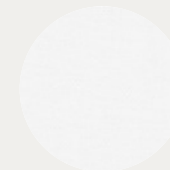
Ardoise 08



Aubergine 27



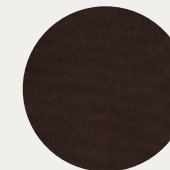
Bergamotte



Blanc 01



Brun 23



Cacao 168



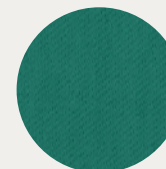
Terre 107



Chamois 111



Chataigne 55



Eucalyptus 117



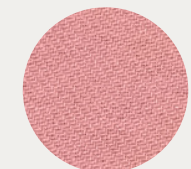
Glacier 43



Ivoire 02



Lin 11



Saumon 143



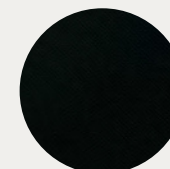
Marine 25



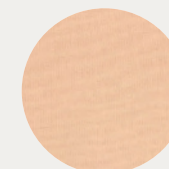
Naturel 26



Navy 120



Noir 12



Peche 52



Pervenche 13

materials_