

curtains : band C

weave (dimout)



View our full range of materials at stansons.co.uk



moonwalking_



Moonwalking is a twill fabric with a pronounced and distinctive yarn. It's 30 trendy tones offer warmth and lightness in a refreshingly refined, but textured aesthetic.

it's all in the *details*:

Colors: 30 colours

Width: 280mm

Weight gr/m²: 270

Composition: 100% flame resistant polyester

Shrinkage tolerance: -3

Light fastness 1 = v.low 8 = excellent: 6

Cleaning: 60°

Fire Resistance: M1 / B1 / IMO PASS / UNI 8456 / 9174
Classe Uno

Acoustic rating: 0

sustainability:

Recycled %: 0

Country of origin: Mainland Europe

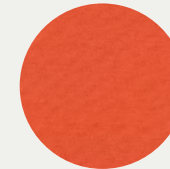
Fossil fuel consumption MJ/m²: 76.1

Carbon footprint kg CO2 eq/m²: 3.22

Water consumption M3 eq/m²: 1.45



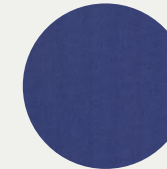
Agrume



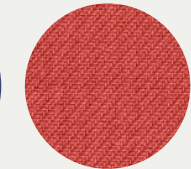
Mandarine



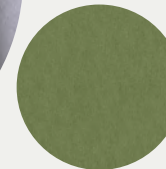
Miel



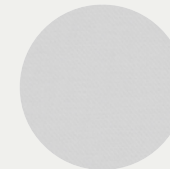
Ocean



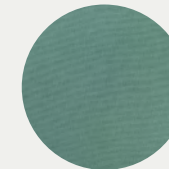
Tomette



Olive



Souris



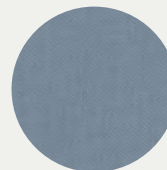
Absinthe



Arctique



Titanium



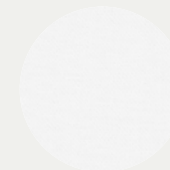
Ardoise



Aubergine



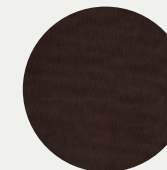
Bergamotte



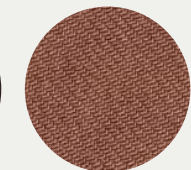
Blanc



Brun



Cacao



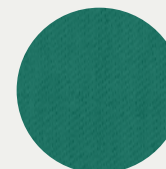
Terre



Chamois



Chataigne



Eucalyptus



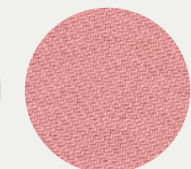
Glacier



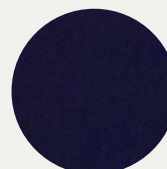
Ivoire



Lin



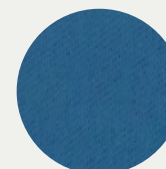
Saumon



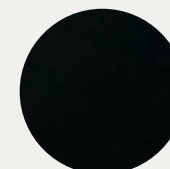
Marine



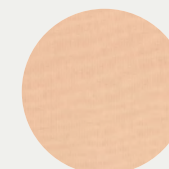
Naturel



Navy



Noir



Peche



Pervenche

materials_