

curtains : band B

voile



View our full range of materials at [stansons.co.uk](https://stansons.co.uk)

# dance\_



Dance is a natural-looking transparent curtain fabric with a sustainable footprint. The open linen look-a-like structure is created with a mixture of yarns of uneven thickness and in several different colour depths. Dance is fused with a technologically advanced material. To produce Dance, used plastic PET bottles are collected and transformed into reusable polyester filaments. The process is significantly more energy-efficient than for virgin polyester and reduces the use of natural resources.

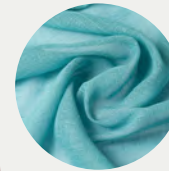
## it's all in the *details*:

**Colors:** 18 colours  
**Width:** 315mm  
**Weight gr/m<sup>2</sup>:** 101  
**Composition:** 100% flame resistant polyester  
**Shrinkage tolerance:** 0%  
**Light fastness 1 = v.low 8 = excellent:** 6  
**Cleaning:** 40°  
**Fire Resistance:** M1 (NF P 92 503-507)  
**Acoustic rating:** 0

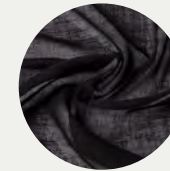
## *sustainability:*



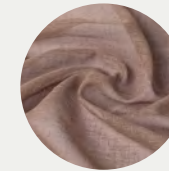
**Recycled %:** 43  
**Country of origin:** Mainland Europe  
**Fossil fuel consumption MJ/m<sup>2</sup>:** +50% renewable energy  
**Carbon footprint kg CO<sub>2</sub> eq/m<sup>2</sup>:** No data  
**Water consumption M<sup>3</sup> eq/m<sup>2</sup>:** No data



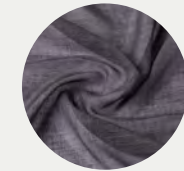
Aqua Blue



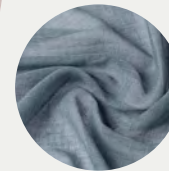
Black



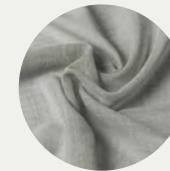
Brown



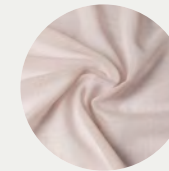
Anthracite



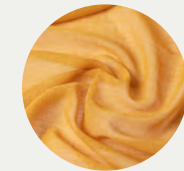
Grey Blue



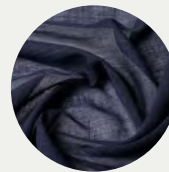
Grey Green



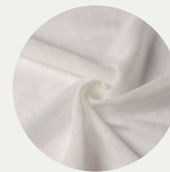
Light Grey



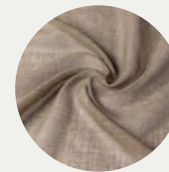
Gold Yellow



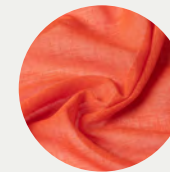
Navy Blue



Off White



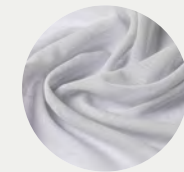
Olive Green



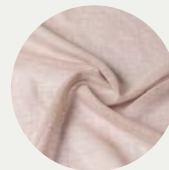
Red Orange



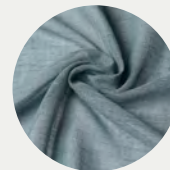
Rust



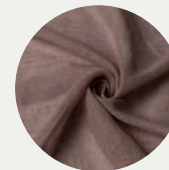
Grey



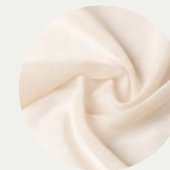
Sand



Sea Blue



Taupe



Ecru