



RSL50 Roller System_



STANSONS_

RSL50

Roller System

The RSL50 Roller System offers sleek rounded chain guard profiles which are ideal for both residential and commercial applications. The premium G200 clutch features an advanced geared patented technology, the planetary gearing mechanism enhances the lifting capacity by up to three times all whilst retaining minimal user effort

Aesthetical Features:

- Sleek, rounded chain guard design
- Reduced light gaps

Assembly / Production Features

- Greater flexibility in installation with spring loaded idle end
- Universal brackets
- Hooked clutches for a secure application
- Easy chain attachment

Functional Benefits

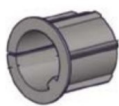
- Smooth operation
- Long-lasting fiberglass-filled nylon construction
- 2 clutch options to suit different applications
- Limited lifetime warranty



RSL50 CLUTCH - SL20



RSL50 50mm
TUBE ADAPTOR



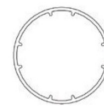
G200
GEARED CLUTCH



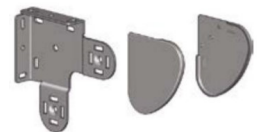
RSL50
IDLE END



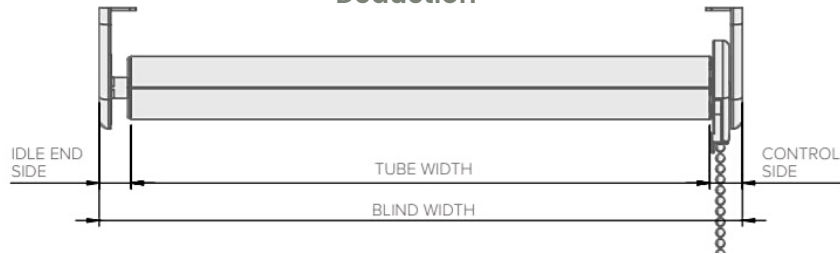
RTEA5T16
50mm TUBE



RSL50
DOUBLE BRACKET



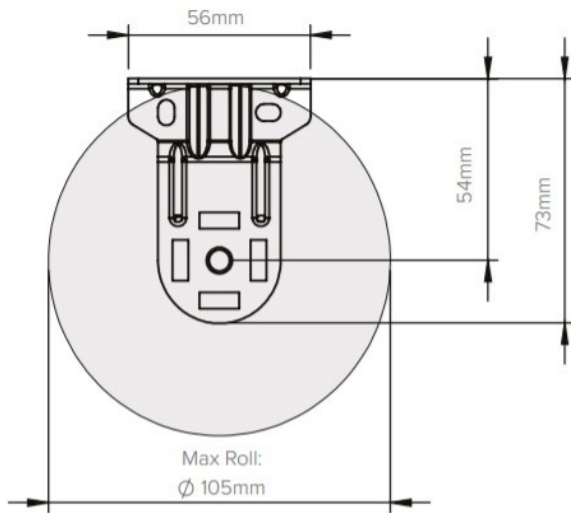
Deduction



Minimum blind size, SL20 mech, 300mm

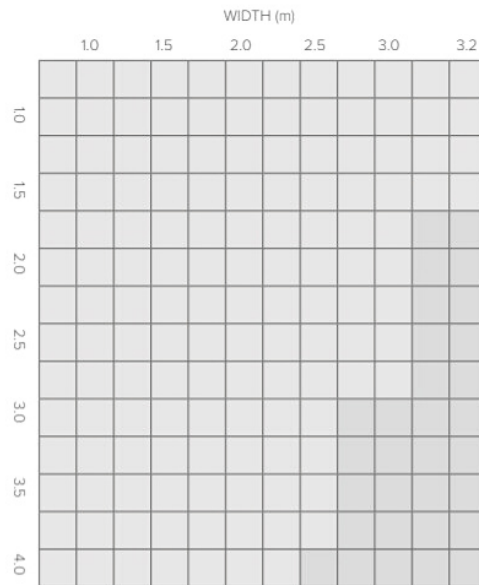
	OVERALL DEDUCTIONS	CONTROL SIDE (SL10)	IDLE SIDE DEDUCTIONS
Without covers	28	15	13
With covers	32	17	15

RSL50 MAX. ROLL DIAMETER



System capacity

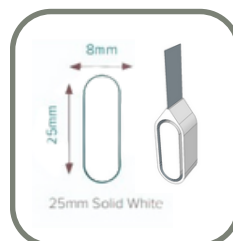
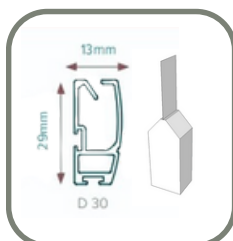
Based on recommended user effort

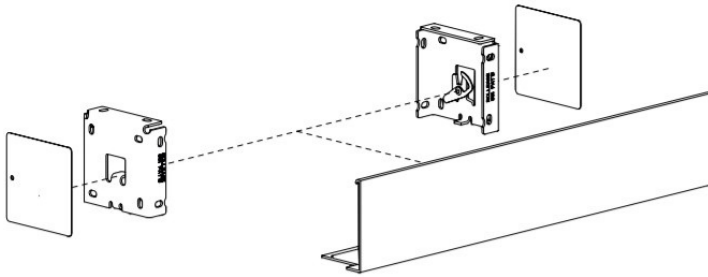


CONTROL	TUBE
RSL50 Clutch	RTEA5T16 50mm Tube

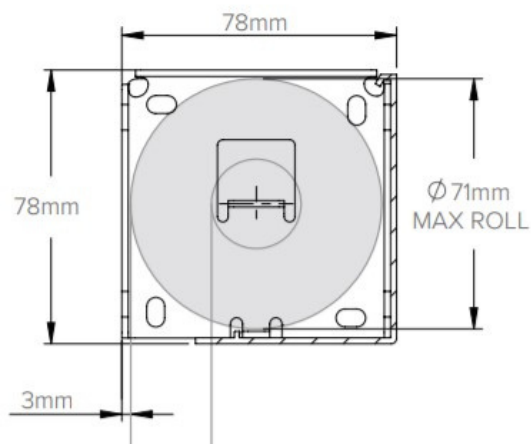
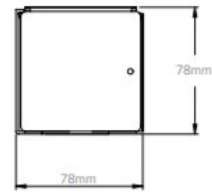
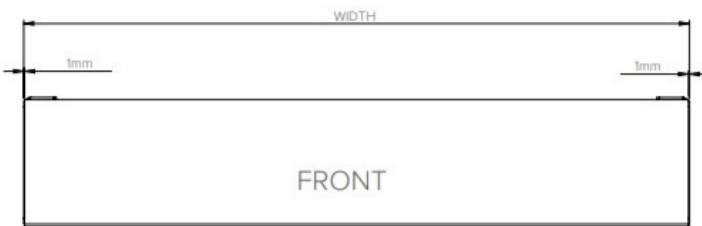
Chart based on a 50mm tube, 420gm fabric weight, 0.6mm thickness & external bottom bar

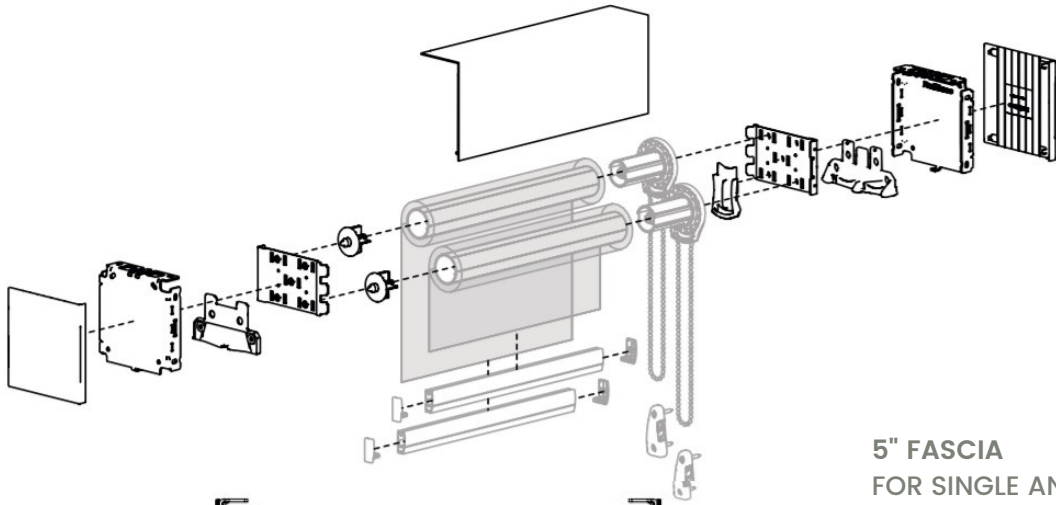
BOTTOM BARS



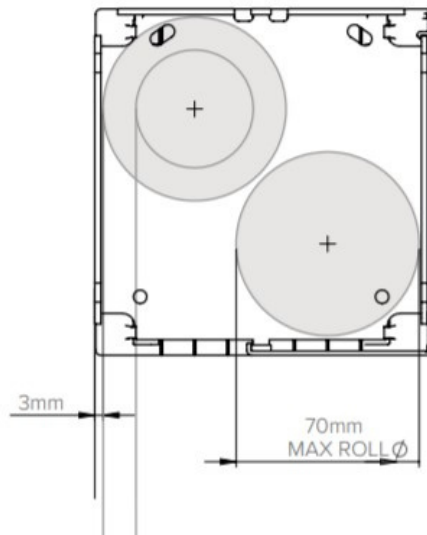
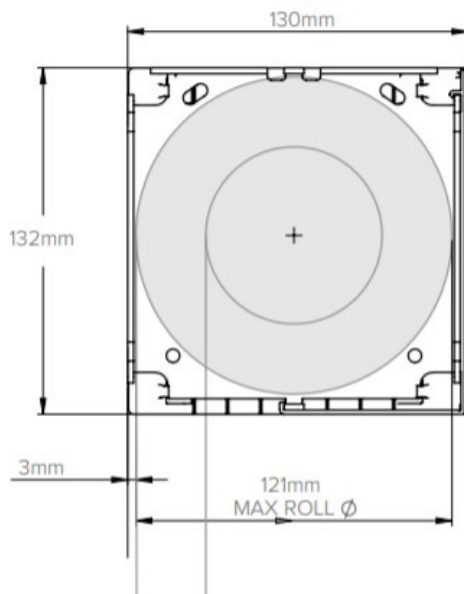
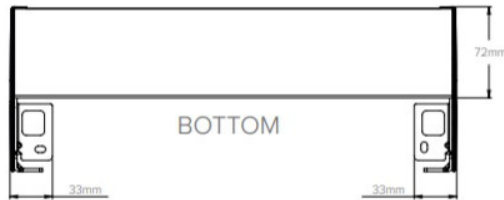
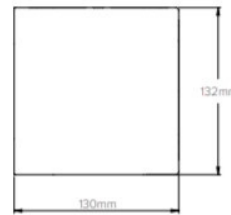
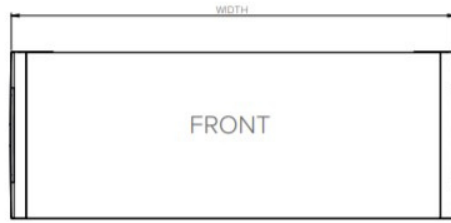
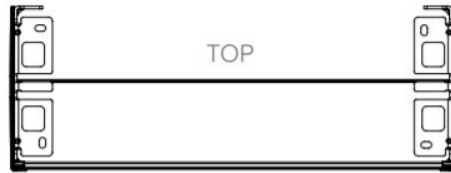


3" FASCIA
FOR SINGLE
ROLLER





5" FASCIA
FOR SINGLE AND
DUAL ROLLERS



Features

- Levelling Control
- Simple limit setting and adjustment
- Favourite position
- 3 operational speed settings available
- 2 way RF communication
- Rechargeable built in Li-ion battery
- Up to 500 up & down cycles, per charge (based on recommended max. shade size)
- New ARC protocol for simple programming

Benefits

AUTOMATE | Li-ion ARC motors offer a wire free rechargeable easy to use and program solution to suit a large range of applications with varying torques and speed levels.

The Levelling Control feature allows for precise positioning of multiple shades ensuring perfect alignment. Additionally, a favourite position can be pre-set and recalled at any time.

Motorisation Optional Extras

[Rollease Automate LI-ON Motor 2Nm](#)

[Rollease Automate LI-ON Motor 3Nm](#)

[Rollease E6 240V RTS Motor 6Nm](#)

[Rollease M6 240V Hardwire Motor 6Nm](#)

[Automate LI-ON AC/DC charger \(UK\)](#)

[Automate 1 channel handset](#)

[Automate 5 channel handset](#)

[Automate 1 channel wall switch](#)

[Automate pulse hub](#)

[Automate solar panel](#)

[Also compatible with Somfy motorisation](#)

Standards

[50mm tube](#)

[RSL50 Mechanism](#)

[RH Controls \(unless otherwise specified\)](#)

[Metal chain](#)

[White brackets](#)

[White round aluminium bottom bar](#)

[1 child safety P-clip per blind](#)

Optional extras

[G200 Geared Mechanism](#)

[Bracket covers, white plastic](#)

[1mm Nylon coated steel guide wires \(independently fixing\) D30 bottom bar only \(included in price\)](#)

[Sewn in bottom bar](#)

[Silver aluminium bottom bar](#)

[Welded bottom pocket with open ends](#)

[Welded bottom pocket with closed ends](#)

[D30 bottom bar white](#)

[Double Brackets](#)

[3" fascia for single roller](#)

[5" fascia for single and dual rollers](#)



STANSONS_

