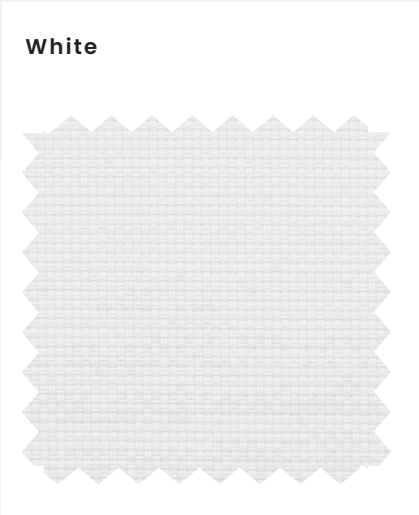
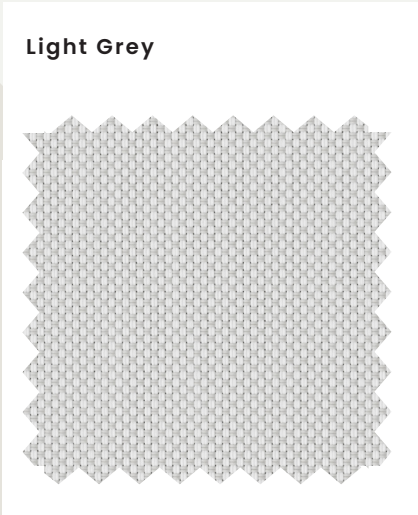
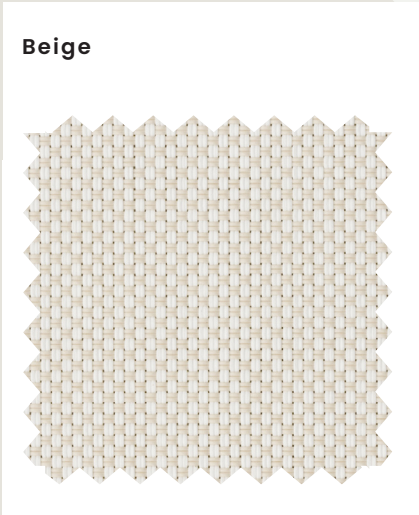
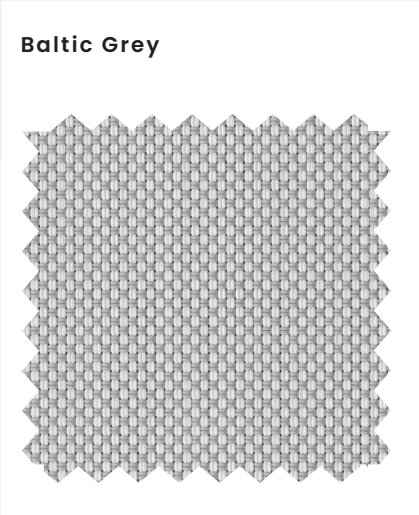
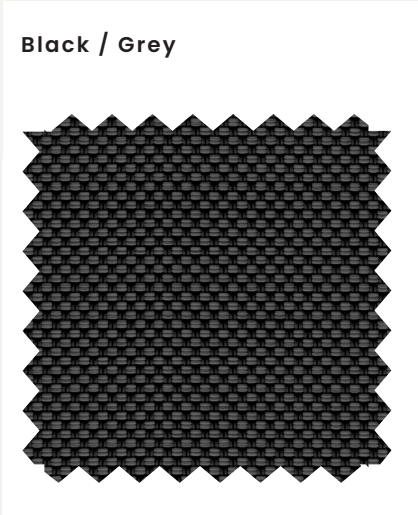
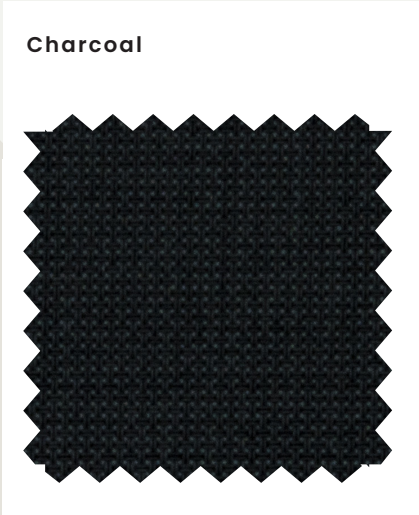
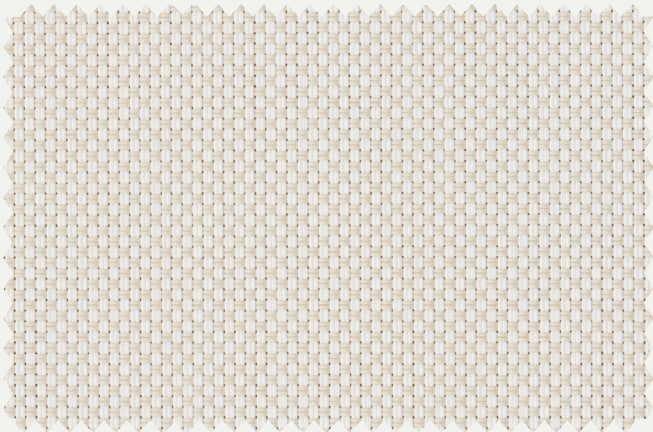


romano 0% blackout



romano 0% blackout

About the fabric

| | |
|-----------------------------|---|
| Pattern: | Basket weave 2 / 2 |
| Composition: | 55% PVC / 15% PES / 30% acrylic coating |
| Weight (gsm): | 630 |
| Thickness (mm): | 0.67 |
| Width (mm): | 3000 |
| Colour fastness: | >7 (ISO105 B02) |
| Flame retardant: | Yes |
| Health & safety: | Greenguard / Greenguard gold / Oekotex / Reach compliant |
| Micro organism: | STME2180, ASTMG21 |
| Cleaning: | Remove dust from the fabric surface, then wipe gently with a damp soft sponge with mild detergent |
| Tensile Strength (daN/5cm): | Warp 251 / Weft 244 |
| Tearing Strength (daN): | Warp 4 / Weft 5 |

Additional information

| Colour | OF | Ts(%) | Rs(%) | As(%) | Tuv | Tv | Gtot | Fc | Thermal comfort | Glare control | Privacy at night | Visual contact to outside | Daylight utilisation |
|-------------|----|-------|-------|-------|-----|----|------|------|-----------------|---------------|------------------|---------------------------|----------------------|
| White | 0% | 0 | 71 | 29 | 0 | 0 | 0.34 | 0.48 | 2 | 4 | 4 | 0 | 0 |
| Beige | 0% | 0 | 71 | 29 | 0 | 0 | 0.34 | 0.48 | 2 | 4 | 4 | 0 | 0 |
| Light grey | 0% | 0 | 71 | 29 | 0 | 0 | 0.34 | 0.48 | 2 | 4 | 4 | 0 | 0 |
| Charcoal | 0% | 0 | 71 | 29 | 0 | 0 | 0.34 | 0.48 | 2 | 4 | 4 | 0 | 0 |
| Baltic grey | 0% | 0 | 71 | 29 | 0 | 0 | 0.34 | 0.48 | 2 | 4 | 4 | 0 | 0 |
| Black grey | 0% | 0 | 71 | 29 | 0 | 0 | 0.34 | 0.48 | 2 | 4 | 4 | 0 | 0 |

of: openness factor / Ts: Solar Transmittance / Rs: Solar Reflectance / As: Solar Absorbance / Tuv: UV Transmittance / Tv: Visible Light Transmittance / Measurement according to EN410, Glass Type C.
Technical data subject to change.



SHOWROOM

THE BANKING HALL, 74 GOSWELL RD,
CLERKENWELL, LONDON EC1V 7DA

HEAD OFFICE

WICKENS PLACE, GODSTONE HILL,
GODSTONE, RH9 8AP