

# Orleans 3%

Contract Fabric Collection

## Product Specification

Composition:	Green PVC 75% / Polyester 25%	(Standard)	ISO 1833-1 : 2006
Thickness: (mm)	0.61 +/-		ISO 5084-1996
Weight: (g/m <sup>2</sup> )	407 +/-		ISO 3081-1977
Width (mm):	2500 & 3000		
Fabric Count: (sq. inch)	46 end x 52 picks		ISO 7211/2-1984
Tensile Strength: (daN/5cm)	Warp 160, Weft 180 +/-		ISO 1421/1-2003
Tearing Strength: (daN)	Warp 6.6, Weft 7.5 +/-		ISO 1421/1-2003
Colour fastness:	7-8 Grade ISO Blue scale		ISO 105 B02: 1994
Fire Resistance:	BS 5867 part 2		NF p 92-512 (EU)
Environment:	Oeko-Tex Standard 100 Greenguard		
Cutting:	Crush cut or ultrasonic		
Welding:	Thermal, HF, ultrasonic		
Cleaning:	Remove dust from the fabric surface, then wipe gently with a damp soft sponge with mild detergent		

Colour	Thermal factors				Fabric + Glazing g-value			Optical Factors	
	OF	Ts(%)	Rs(%)	As(%)	1/8"CL	1/4"CL	1/4"HA	Tv	Tuv
White/Linen (Front)	3%	16	53	31	0.37	0.37	0.31	10	2
White/Linen (Back)	3%	16	59	25	0.33	0.33	0.30	10	2
White/Pearl (Front)	3%	14	42	44	0.44	0.42	0.35	9	3
White/Pearl (Back)	3%	14	54	32	0.36	0.36	0.31	9	3
White/Grey (Front)	3%	9	23	68	0.54	0.51	0.39	6	3
White/Grey (Back)	3%	9	46	45	0.40	0.39	0.33	6	3
White/Charcoal (Front)	3%	3	10	87	0.58	0.56	0.43	3	2
White/Charcoal (Back)	3%	3	40	57	0.59	0.57	0.43	3	2

OF=Openness Factor, Ts=Solar Transmittance, Rs= Solar Reflectance, As=Solar Absorbance, Tv=Visible Light Transmittance, Tuv=UV Transmittance, g – value (gtot)=Total solar transmittance considering the glazing and the fabric (Low value mean better thermal performance)

Values shown are average values and are for guidance purposes only, we reserve the right to change without prior notice.

## Find out how we can help you.

To request samples or to discuss the window shading requirements for your next project why not get in touch.

0207 190 9850 | sales@stansons.co.uk | www.stansons.co.uk

**STANSONS**  
HIGHLIGHTING SHADE

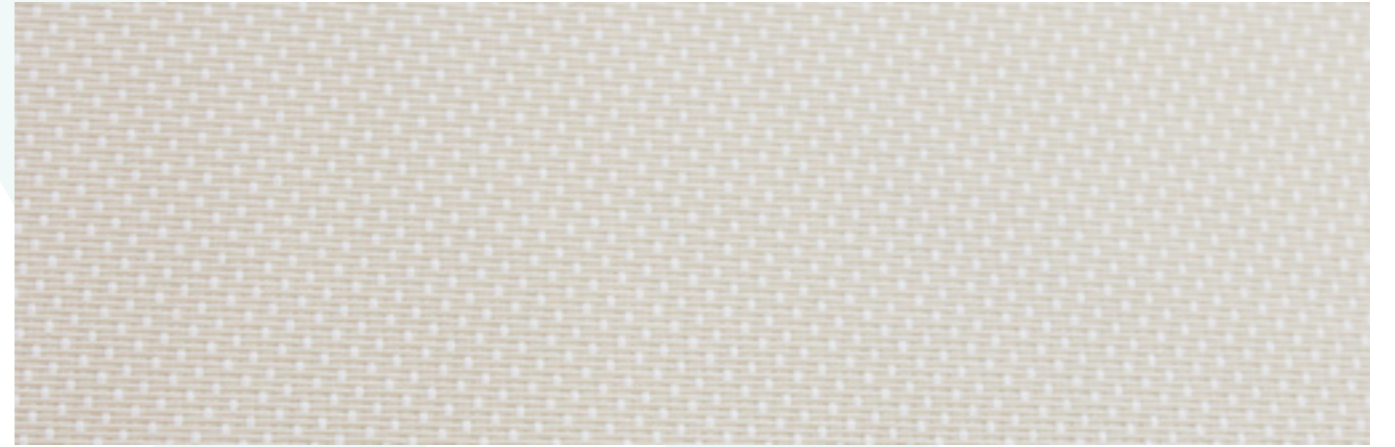
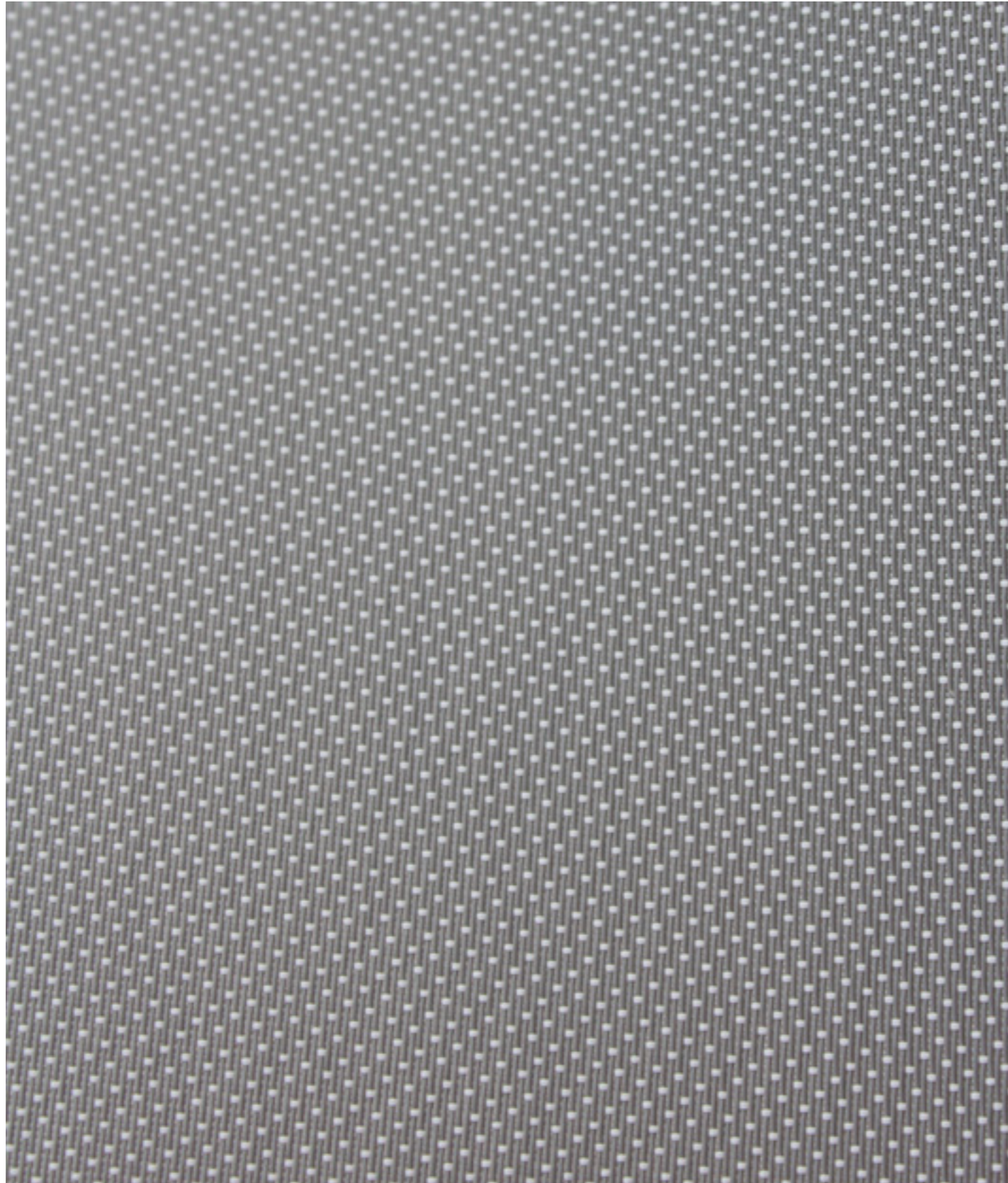


Gatwick: Wickens Place, Godstone Hill, Godstone, Surrey, RH9 8AP  
London: The Stanley Building, 7 King's Boulevard, Kings Cross, London, N1C 4AG  
Leeds: No. 1 Aire Street, Leeds, LS1 4PR

**STANSONS**  
HIGHLIGHTING SHADE

# Orleans 3%

Contract Fabric Collection



White / Linen



White / Pearl



White / Grey



White / Charcoal

\*Please note that all due care has been taken to best represent the colour of these fabrics however due to variances in screens, this fabric chart should be used as a guide only. Some variation in appearance and consistency may occur. We recommend making final fabric selection from actual fabric samples which you can order via customer services.